

pop bio

Vü Imaging System

Your Trusted Solution
for Imaging



www.pop-bio.com

Vü Imaging

Home of innovative imaging products



Pop Bio Vü Imaging System is built on over 100 years of collective imaging experience, with our expert development team having developed multiple patented imaging techniques for the scientific and healthcare markets.

With extensive world-wide distribution experience in the establishment of sales channels for gel and blot imaging systems, Pop Bio is an established and respected group in the life science market.



**Non-CCD Camera
Technology Gel
Imaging**



**No Motorized Light
Filter Wheel is
Required**



**No Cooling System
is Required for
Noise Reduction**



**Compact
Small Footprint**





Vü Imaging Operation Process of Vü System



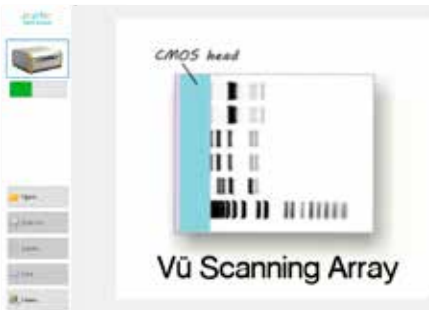
1

Start the imaging software, confirm light source then place the gel / blot



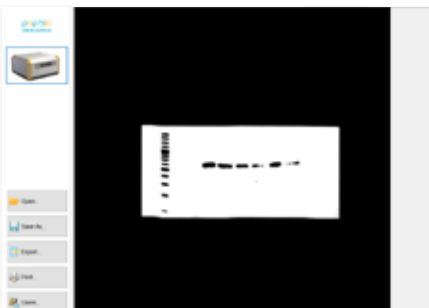
2

Push in the gel tray



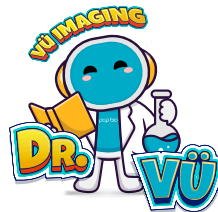
3

Auto-scanning of Gel Image is in progress

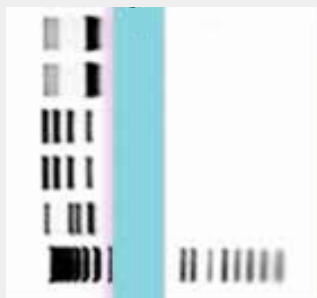


4

Result Image Displayed and Auto Saved



Vü Scanning Sensor Array (Patented)

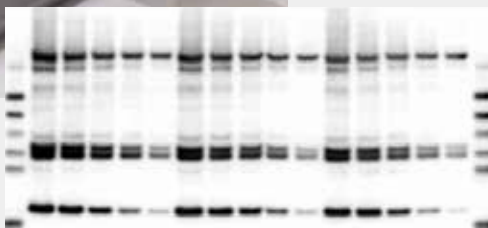


- System is equipped with Vü patented Scanning Sensor Array to collect gel imaging output.
- Sensor is about 3mm – 5mm near to the gel or blot, to maximize imaging signal collection.
- Provides Ultra Resolution (up to 90 megapixels) and High Intensity Blot and Gel Images.
- Benefits to low signal samples or faint bands imaging collection.
- Aids to better imaging background and low noise.

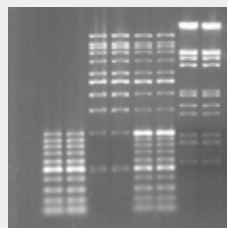
Automated Intelligence Imaging Process



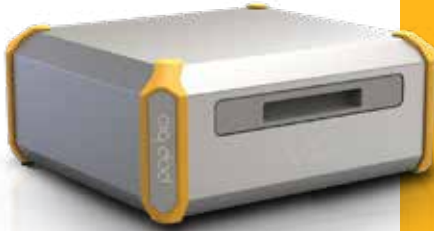
- Imaging process is intelligently operated by the Automated Imaging Acquisition Software.
- Places the gel or blot on tray, push the tray to close, system automatically detects and starts the image acquisition, then saves it automatically to pre-defined drives.



Chemiluminescence Blot
Image Example (Vü-C)



Fluorescence Gel
Image Example (Vü-F)



Vü-C (Chemiluminescence)

- System is applicable for Western Blot.
- It is equipped with RGB integral LED for White Light, Colour and Chemiluminescence illumination.
- Weight of equipment is 8 kg.
- It is applicable for blot size up to 10 x 10 cm.



Vü-F (Fluorescence)

- System is applicable for Fluorescent Gel (EtBr / SYBR® Green / Safe Dyes) and SDS-PAGE Gel (Coomassie Blue / Silver Stain).
- It is equipped with UV, Blue Light LED and White Light Screen illumination.
- Weight of equipment is 15 kg.
- System is applicable for gel size up to 20 x 20 cm.

System Recommendation by Application

Pop Bio Vü Imaging Systems are compatible with various sample types.

Choose the best imaging system for your lab based on your applications.

Vü-F

UV Light

- Ethidium Bromide
- ViSafe Red Gel Stain
- PopDye Red Gel Safe Stain
- SYPRO® Ruby
- Other UV Gels
- SYBR® Green or SYBR® Safe Dye
- GelRed Stains

Blue Light

- SYBR® Green
- SYBR® Gold
- SYBR® Safe
- Gel Green
- SYPRO® Ruby
- Safe View
- Flamingo™
- ViSafe Green Gel Stain
- PopDye Green Gel Safe Stain

White Light Conversion

- Coomassie Blue
- Coomassie Brilliant Blue
- Silver Stains
- Protein Gels
- Visible Light Gels

Vü-C

- Chemiluminescence
- ECL
- Colorimetric Blots

Vü Imaging
**Intelligent, Automated &
Comprehensive Software Package**

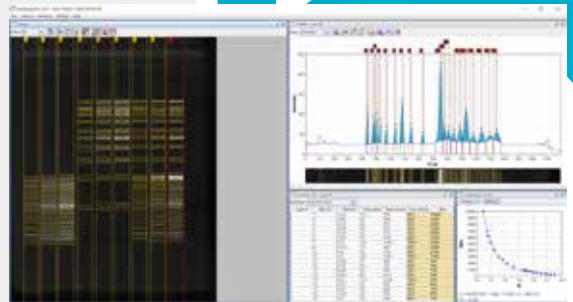


Vü Imaging Software

- Fully automated
- Intelligent acquisition process
- Simple and intuitive user interface
- Easy to use
- Quick and easy viewing

Analysis Software

- Workflow based concept
- Automatic lane and band detection
- Fix run distortions through Rf calibration
- Define and subtract profile background
- Quantity and molecular weight calibration



Vü Imaging Specification

Vü-F	
Application	Fluorescent gels and Protein Gels
Illumination	UV integral tube 302nm Blue light integral LEDs White light conversion screen
Sample size (cm)	20 x 20
Sensor resolution	90 megapixels
Image output	TIFF
Footprint D x W x H	470 x 435 x 200 mm
Power supply	100 – 240 V external
Connectivity	Integral Wi-Fi and Ethernet
Analysis software	Unlimited
Warranty	2 years

Vü-C	
Application	Chemiluminescence Western blots
Illumination	RGB integral LEDs for marker including coloured markers
Sample size (cm)	10 x 10
Sensor resolution	51 megapixels
Image output	TIFF
Footprint D x W x H	390 x 355 x 180 mm
Power supply	100 – 240 V external
Connectivity	Integral Wi-Fi and Ethernet
Analysis software	Unlimited
Warranty	2 years

Ordering Information

Product Code	Product Description
10-1007-02*	Vü-C Chemiluminescence Imaging System
10-1007-04*	Vü-F Fluorescence Imaging System
10-1007-07*	Vü-C/F Combo of Chemiluminescence and Fluorescence Imaging System
20-1001-01	Vü-C Chemi. Tray
20-1001-30B	Vü-C Black Chemi. Plastic Blot Cover
20-1001-30W	Vü-C White Chemi. Plastic Blot Cover
20-1001-02	Vü-F Transparent Gel Tray
20-1001-03	Vü-F Blue Light Black Gel Tray
20-1001-26	Vü-F White Light Convertor Screen
20-1001-06	Power Pack
20-1001-33	Main Power Cord, UK Type
20-1001-34	Main Power Cord, EU Type
20-1001-35	Main Power Cord, US Type
20-1001-11	Vü Ethernet Cable

*System includes main unit, gel trays, light converters or blot covers, ethernet cable, Vü Imaging Software and Analysis Software.



www.pop-bio.com



pop bio

Enquiry info@pop-bio.com

Service & Support technical@pop-bio.com

UK

Pop-Bio Ltd. Milton Hall, Ely Road, Milton, Cambridge, CB24 6WZ, UK

Malaysia

Pop Bio Sdn Bhd 200301032430 (634851-X)

Level 17, Top Glove Tower, No.16, Persiaran Setia Dagang,
Setia Alam, Seksyen U13, 40170 Shah Alam, Selangor Darul Ehsan,
Malaysia

